



ENGINEERING SPECIFICATION

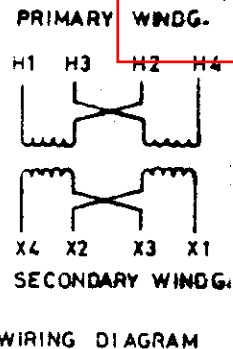
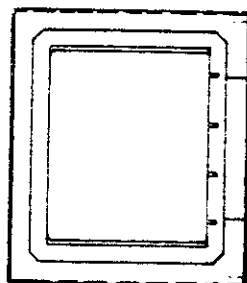
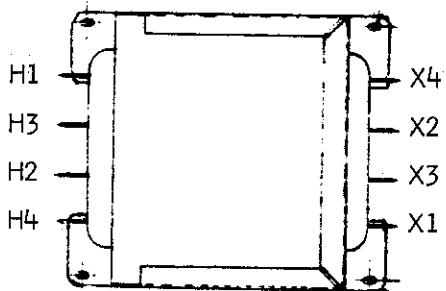
REV: 01

PART : TRANSFORMER 1PH-50/60HZ
240/480 TO 120/240

PART NO. 800-321-SUFF(06 & 07)

ENG'G. REF. ONLY

T1-1



DESCRIPTION : INDUSTRIAL CONTROL TRANSFORMER CORE AND COIL TYPE OPEN -
STYLE FOR PANEL BOARD MOUNTING.

APPROVAL : UL RECOGNISED

PRIMARY : 240/480 VOLTS 50/60 HZ

SECONDARY : 120/240 VOLTS 50/60 HZ

LOAD : RELAY COILS, CONTACTOR COILS AND SOLENOIDS 0.2 PF.

REGULATION : NO LOAD / FULL LOAD, 3% MAXIMUM.

SUFF R A T I N G

06	500 VA IN STILL AIR
07	750 VA IN STILL AIR

AL-ZAMIL REFRIGERATION INDUSTRIES

SHEET 1 OF 3 SHEETS

CHECKED BY *Abdullah Khan*
PONNERI RAMESH *13/06/89*

APPROVED BY LARRY F. HILDEBRAND *[Signature]*

01 ADDED SHEETS 2 & 3 VENDOR INFO. *[Signature]*

REVISIONS

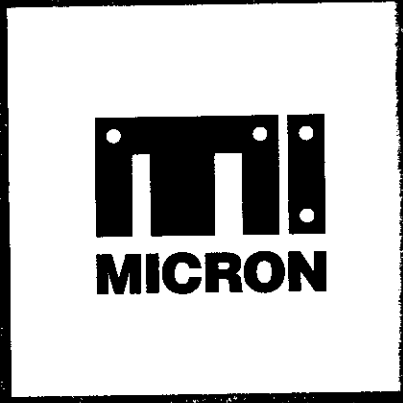
DATE

ISSUE DATE 13TH JUNE 1989

REV# 01

The Micron Edge

NUMBER ONE



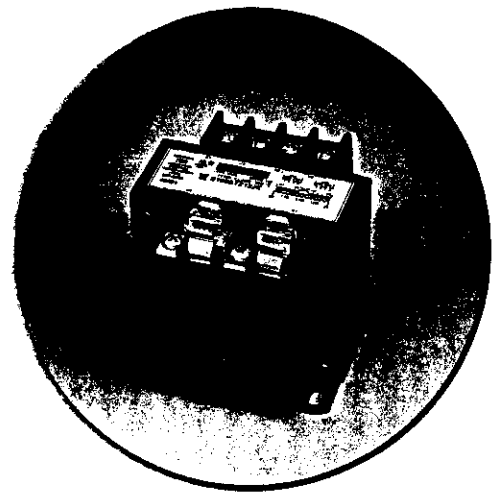
The Micron Edge in Industrial Control Transformers

While other manufacturers view control transformers as just another variety of products, we view them as the **NUMBER ONE** major product focus for Micron. This focus, along with Micron's commitment to customer service and quality, has made Micron **Number One** with suppliers of transformers.

Our commitment to quality is reflected in our ISO 9001 certification, which is the only one of its kind in the transformer industry. Our commitment to quality is also reflected in our ISO 14001 certification, which is the only one of its kind in the transformer industry. Our commitment to quality is also reflected in our ISO 14001 certification, which is the only one of its kind in the transformer industry.

ImperviTRAN®

T1-2



Impervitran... is the ultra-reliable industrial control circuit transformer. Behind its clean design is a toughness that makes it measure up to any requirement placed upon it. Manufacturers of industrial and commercial equipment, control panels and centers have made **Impervitran** the most accepted transformer in the industry.

- Epoxy encapsulated coils
- Secondary fuse clips where applicable
- Optional Primary Fusing
- Molded terminal barriers
- 10-32 screw terminals
- Molded-in terminals
- Phil-slot screws ▶

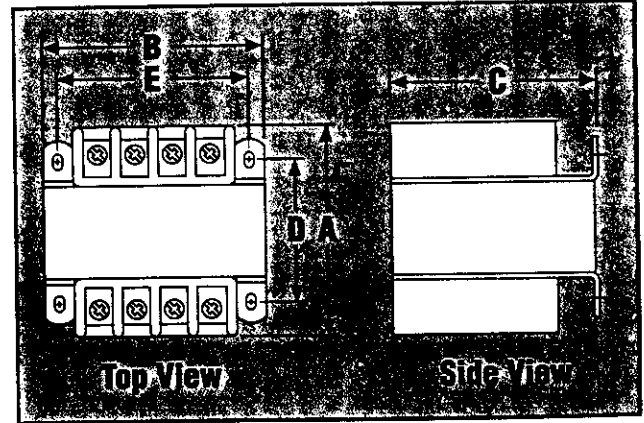


Figure B

Impervitran Construction
 Class 105°C Insulation system
 55°C temperature rise
 Epoxy encapsulated coils



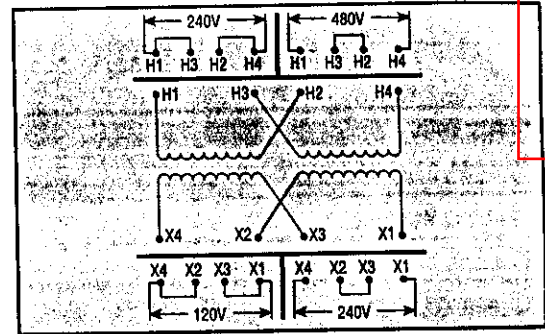
Group K



Primary Volts
240 x 480

Secondary Volts
120 x 240

UL and SF Listed **50 / 60 Hz**



VA Rating	Catalog Number	Construction Figure	Output Amps	DIMENSIONS (inches) • mm					Mounting Slots	Approx. Wt. (lbs.) • kg
				A	B	C	D	E		
50	V050PU1519J	B	0.38	4-102	3 3/8-85	2 1/4-73	2 7/16-62	2 11/16-71	1 3/4 X 1 1/2	4.0 • 1.8
100	V100PU1519J	B	0.77	4 1/4-117	3 3/4-98	3 1/8-81	3 1/8-78	3 1/2-79	1 3/4 X 1 1/2	6.6 • 3.0
150	V150PU1519J	B	1.15	4 7/16-118	4 1/2-114	3 3/16-97	2 7/8-73	3 3/8-95	1 3/4 X 1 1/2	8.8 • 4.0
250	V250PU1519J	B	1.92	5 1/4-149	4 7/8-114	3 13/16-97	4 1/8-111	3 3/8-95	1 3/4 X 1 1/2	14.7 • 6.7
350	V350PU1519J	B	2.69	5 1/2-143	5 1/4-133	4 1/16-113	4 3/8-121	4 3/8-111	1 7/8 X 1 1/2	18.6 • 8.5
500	V500PU1519J	B	3.85	7-178	5 1/2-133	4 7/16-118	6 1/8-155	4 3/8-131	1 7/8 X 1 1/2	25.6 • 11.6
750	V750PU1519J	B	5.77	7 1/4-178	6 3/4-171	5 1/4-146	4 1/8-106	6 1/8-154	1 7/8 X 1 1/2	30.5 • 13.9

JJ suffix denotes transformer supplied with primary & secondary J-2 jumpers; secondary fuse clips not applicable.

17



Group L

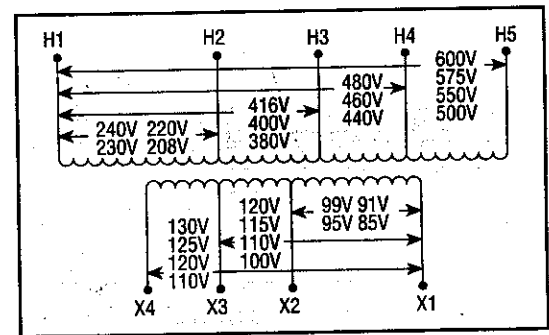
Universal Transformer



Primary Volts
240/416/480/600, 230/400/460/575, 220/380/440/550, 208/500

Secondary Volts
99 / 120 / 130, 95 / 115 / 125, 91 / 110 / 120, 85 / 100 / 110

UL and SF Listed **50 / 60 Hz**



VA Rating	Catalog Number	Construction Figure	Output Amps	DIMENSIONS (inches) • mm					Mounting Slots	Approx. Wt. (lbs.) • kg
				A	B	C	D	E		
50	V050-0482-1	V	0.38	4-102	3 3/8-85	2 1/4-73	2 7/16-62	2 11/16-71	1 3/4 X 1 1/2	4.0 • 1.8
100	V100-0483-1	V	0.77	4 1/4-117	3 3/4-98	3 1/8-81	3 1/8-78	3 1/2-79	1 3/4 X 1 1/2	6.6 • 3.0
150	V150-0484-1	V	1.15	4 7/16-118	4 1/2-114	3 3/16-97	2 7/8-73	3 3/8-95	1 3/4 X 1 1/2	8.8 • 4.0
250	V250-0485-1	V	1.92	5 1/4-149	4 7/8-114	3 13/16-97	4 1/8-111	3 3/8-95	1 3/4 X 1 1/2	14.7 • 6.7
350	V350-0486-1	V	2.69	5 1/2-143	5 1/4-133	4 1/16-113	4 3/8-121	4 3/8-111	1 7/8 X 1 1/2	18.6 • 8.5
500	V500-0487-1	V	3.85	7-178	5 1/2-133	4 7/16-118	6 1/8-155	4 3/8-131	1 7/8 X 1 1/2	25.6 • 11.6
750	V750-0488-1	V	5.77	7 1/4-178	6 3/4-171	5 1/4-146	4 1/8-106	6 1/8-154	1 7/8 X 1 1/2	30.5 • 13.9

-1 suffix denotes transformer supplied with secondary fuse clips for a 1 1/2 x 1 1/2 fuse; primary jumpers not applicable.

800-321-0640
800-321-0640

P/N: 800-321-06407

SHEET 3 OF 3

REV 01