



**ENGINEERING
SPECIFICATION**

Part No.	800-098-SUF.(50 to 55)
Ref. Code	402
U.O.M.	EA
Engg. Ref.	CAC/ CHILLER

Part Description : CONTACTOR, 3 POLE

J1-1

BASIC REQUIREMENTS

NO. OF POLE : 3

OPERATIONAL VOLTAGE RANGE : 80-110% OF RATED CONTROL VOLTAGE

OPERATIONAL AMBIENT TEMP. RANGE : -20 TO + 55 DEG. C(REFER ZSS: 2005)

AUXILIARY CONTACT : 1 NO CONTACT TO BE SUPPLIED W/ CONTACTOR


ENCLOSURE CLASSIFICATION : AS PER IEC

DIELECTRIC STRENGTH : 1.2KV/1 SEC. MIN.

CERTIFICATION DESIRED : IEC, UL

SUF. No.	REV. No.	RATED CURRENT		CONTROL VOLTS VAC 50/60HZ
		AC3 INDUCT	ACI NON-INDUCT	
50	01	9 A	25A	24
51	01	9 A	25A	220
52	01	12 A	30A	24
53	01	12 A	30A	220
54	01	18 A	30A	24
55	01	18 A	30A	220

QUALIFIED


 200905
 QA DATE

ALL DIMENSION ARE IN mm				SHEET 1 of 4		SCALE : N.T.S	
Tolerance: : Unless noted (±) : fraction 1/32" ; Decimal 0.031				Prepared by	AL-ALI. HUSSAIN		
				INITIATOR	M. IBRAHIM		
				ENG. CHECK	AHMAD		
SEE TABLE	SUF. 56 TO 68 MOVED TO SEPARATE SHEET		HUSAIN	07-09-05	VERIFIED	Moh'd Al Sayyed	
	ADDED SUFF# 60 TO 68		HUSAIN	20-03-05	APPROVAL	MATHEW	
				Issue Date	19-07-2003		
Rev #	Revision Details		Designer	Rev.Date	File Ref.	Ziiceip001\Eng-Specs\800\09850-55	



ENGINEERING SPECIFICATION

Part No.	800-098-SUF.(50 to 55)
Ref. Code	402
U.O.M.	EA
Engg. Ref.	CAC/ CHILLER

Part Description : CONTACTOR, 3 POLE

J1-2

REFERENCE DATA

VENDOR : LARSEN & TOUBRO LIMITED, INDIA.

OVERALL SIZE & SHAPE : REFER SHEET 04 OF 04

END TERMINAL DETAILS (COIL) : SCREW TYPE

COIL DROPOUT VOLTS : 35 – 65% OF RATED CONTROL VOLTAGE

COIL PICK UP VOLTAGE : 80-110% OF RATED CONTROL VOLTAGE

MECHANICAL LIFE : 15 x 10⁶ OPERATING CYCLE

AUXILIARY CONTACT POSITIONS : SIDE MOUNTED

PACKING DETAILS : INDIVIDUALLY PACKED

SUF. No.	REV. No.	VENDOR MODEL#	COIL(VA) RATING		LRA	
			SEALED	INRUSH	UP TO 240VAC	480VAC
50	01	MNX 9	11	75	64	46
51	01	MNX 9	11	75	64	46
52	01	MNX 12	11	75	64	63.5
53	01	MNX 12	11	75	64	63.5
54	01	MNX 18	11	75	92	81
55	01	MNX 18	11	75	92	81

NOTE:

- ALL CONTACTORS CAN BE USED W/ADDITIONAL SIDE MOUNTED AUXILIARY CONTACT BLOCK (1NO+1NC) P/N: 800-098-40/41
- PART MUST BE MARKED WITH VENDOR P/N & ZAC P/N

QUALIFIED

ALL DIMENSION ARE IN mm				SHEET 2 of 4		SCALE : N.T.S	
Tolerance: : Unless noted (±) : fraction 1/32" ; Decimal 0.031				Prepared by		AL-ALI. HUSSAIN QA	
				INITIATOR		M. IBRAHIM	
				ENG. CHECK		AHMAD	
SEE TABLE	SUF. 56 TO 68 MOVED TO SEPARATE SHEET		HUSAIN	07-09-05	VERIFIED	Moh'd Al Sayyed	
	ADDED SUFF# 60 TO 68		HUSAIN	20-03-05	APPROVAL	MATHEW	
Rev #	Revision Details		Designer	Rev.Date	Issue Date	19-07-2003	
					File Ref.	Ziiceip001\Eng-Specs\800\09850-55	



ENGINEERING SPECIFICATION

Part No.	800-098-SUF.(50 to 55)
Ref. Code	402
U.O.M.	EA
Engg. Ref.	CAC/ CHILLER

Part Description : CONTACTOR, 3 POLE

J1-3

OPERATIONAL REQUIREMENTS

NO. OF POLE	: 3
OPERATIONAL AMBIENT TEMP. RANGE	: -20 TO + 55 DEG. C (REFER ZSS: 2005)
ENCLOSURE CLASSIFICATION	: AS PER IEC
DIELECTRIC STRENGTH	: 1.2KV/1 SEC. MIN.
CERTIFICATION DESIRED	: IEC, UL
OVERALL SIZE & SHAPE	: REFFER SHEET 04 OF 04
END TERMINAL DETAILS (COIL)	: SCREW TYPE
COIL DROPOUT VOLTS	: 35 – 65 % OF RATED CONTROL VOLTAGE
COIL PICK UP VOLTAGE	: 80 – 110% OF RATED CONTROL VOLTAGE
MECHANICAL LIFE	: 15x 10 ⁶ OPERATING CYCLE
AUXILIARY CONTACT/ RATING	: 1NO CONTACT TO BE SUPPLIED W/ CONTACTOR
PACKING DETAILS	: INDIVIDUALLY PACKED

SUF. No.	REV. No.	VENDOR MODEL#	RATED CURRENT		CONTROL VOLTS VAC 50/60HZ	COIL(VA) RATING		LRA		OVERLOAD RELAY P/N FOR REF.
			AC3 INDUCT	ACI NON-INDUCT		SEALED	INRUSH	UP TO 240VAC	480 VAC	
50	01	MNX 9	9 A	25A	24	11	75	64	46	800-098-82 TO 800-098-91
51	01	MNX 9	9 A	25A	220	11	75	64	46	
52	01	MNX 12	12 A	30A	24	11	75	64	63.5	
53	01	MNX 12	12 A	30A	220	11	75	64	63.5	
54	01	MNX 18	18 A	30A	24	11	75	92	81	
55	01	MNX 18	18 A	30A	220	11	75	92	81	

APPROVED VENDOR : LARSEN & TOUBRO LIMITED, INDIA.

QUALIFIED

QA	200905 DATE
----	----------------

ALL DIMENSION ARE IN mm				SHEET 3 of 4		SCALE : N.T.S	
Tolerance: : Unless noted (±) : fraction 1/32" ; Decimal 0.031				Prepared by	AL-ALI. HUSSAIN		<i>[Signature]</i>
				INITIATOR	M. IBRAHIM		<i>[Signature]</i>
				ENG. CHECK	AHMAD		<i>[Signature]</i>
SEE TABLE	SUF. 56 TO 68 MOVED TO SEPARATE SHEET			HUSAIN	07-09-05	VERIFIED	Moh'd Al Sayyed
	ADDED SUFF# 60 TO 68			HUSAIN	20-03-05	APPROVAL	MATHEW
				Issue Date	19-07-2003		
Rev #	Revision Details			Designer	Rev.Date	File Ref.	Ziiceip001\Eng-Specs\800\09850-55

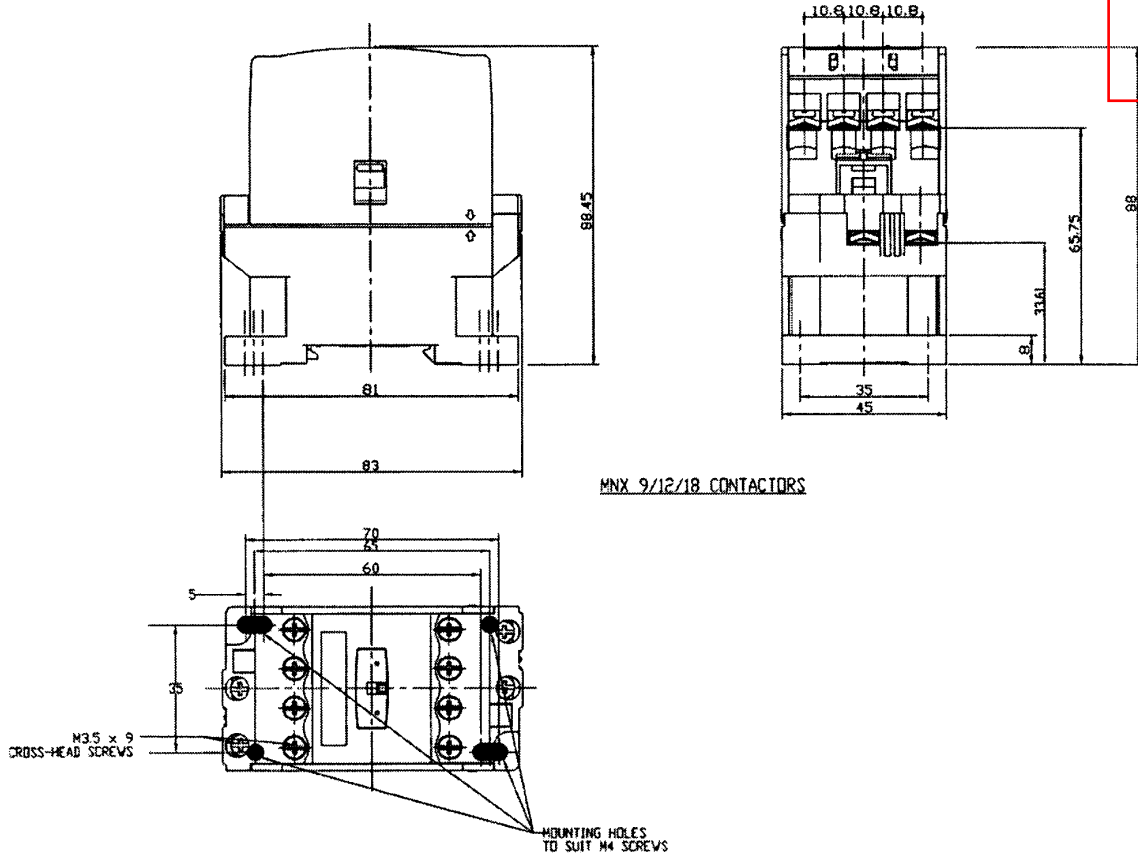


ENGINEERING SPECIFICATION

Part No.	800-098-SUF.(50 to 55)
Ref. Code	402
U.O.M.	EA
Engg. Ref.	CAC/ CHILLER

Part Description : CONTACTOR, 3 POLE

OVERALL DIMENSION & NAME PLATE D.W.G



J1-4

MNX 9/12/18 CONTACTORS

 LISTED 86AD IND. CONT. EQ. E240389 EN 60947-4-1 IEC 60947-4-1 EN 60947-4-1 IEC 60947-4-1 IS 13947-4-1 MNX 9 AUXILIARY CONTACT: Ie AC-15: 4 A, 415 V ~ Ith: 10 A AC-1: 25A U _i : 690V 3~ U _e Ie kW AC-3 415 V 9 A 4 BREAK ALL LINES GENERAL USE: 21 A, 600V AC AWG: 14-10 CU 75 °C SOL AND STR TORQUE: 10.6 LB IN <table border="1" style="width: 100%; text-align: center;"> <tr><td>V AC</td><td>120</td><td>200</td><td>240</td><td>480</td><td>600</td></tr> <tr><td>1 PH</td><td>0.5 HP</td><td>1 HP</td><td></td><td></td><td></td></tr> <tr><td>3 PH</td><td>3 HP</td><td>3 HP</td><td>5 HP</td><td>7.5 HP</td><td></td></tr> </table> <p style="font-size: small;">SUITABLE FOR USE ON A CIRCUIT CAPABLE OF DELIVERING NOT MORE THAN 5000 RMS SYMMETRICAL AMPERES, 600 VOLTS MAXIMUM FUSE: 15A RK5 TIME DELAY TYPE USE FUSE ONLY AUXILIARY CONTACTS: A 600 P 600 GENERAL USE: 10A, 415V</p> <p style="font-size: x-small;">PATENT APPLIED FOR REGD. DESIGN NO.: 187874</p>	V AC	120	200	240	480	600	1 PH	0.5 HP	1 HP				3 PH	3 HP	3 HP	5 HP	7.5 HP		 LISTED 86AD IND. CONT. EQ. E240389 EN 60947-4-1 IEC 60947-4-1 EN 60947-4-1 IEC 60947-4-1 IS 13947-4-1 MNX 12 AUXILIARY CONTACT: Ie AC-15: 4 A, 415 V ~ Ith: 10 A AC-1: 30A U _i : 690V 3~ U _e Ie kW AC-3 415 V 12 A 5.5 BREAK ALL LINES GENERAL USE: 25 A, 600V AC AWG: 14-10 CU 75 °C SOL AND STR TORQUE: 10.6 LB IN <table border="1" style="width: 100%; text-align: center;"> <tr><td>V AC</td><td>120</td><td>200</td><td>240</td><td>480</td><td>600</td></tr> <tr><td>1 PH</td><td>1 HP</td><td>2 HP</td><td></td><td></td><td></td></tr> <tr><td>3 PH</td><td>3 HP</td><td>3 HP</td><td>7.5 HP</td><td>10 HP</td><td></td></tr> </table> <p style="font-size: small;">SUITABLE FOR USE ON A CIRCUIT CAPABLE OF DELIVERING NOT MORE THAN 5000 RMS SYMMETRICAL AMPERES, 600 VOLTS MAXIMUM FUSE: 20A RK5 TIME DELAY TYPE USE FUSE ONLY AUXILIARY CONTACTS: A 600 P 600 GENERAL USE: 10A, 415V</p> <p style="font-size: x-small;">PATENT APPLIED FOR REGD. DESIGN NO.: 187874</p>	V AC	120	200	240	480	600	1 PH	1 HP	2 HP				3 PH	3 HP	3 HP	7.5 HP	10 HP		 LISTED 86AD IND. CONT. EQ. E240389 EN 60947-4-1 IEC 60947-4-1 EN 60947-4-1 IEC 60947-4-1 IS 13947-4-1 MNX 18 AUXILIARY CONTACT: Ie AC-15: 4 A, 415 V ~ Ith: 10 A AC-1: 30A U _i : 690V 3~ U _e Ie kW AC-3 415 V 18 A 9.3 BREAK ALL LINES GENERAL USE: 25 A, 600V AC AWG: 14-10 CU 75 °C SOL AND STR TORQUE: 10.6 LB IN <table border="1" style="width: 100%; text-align: center;"> <tr><td>V AC</td><td>120</td><td>200</td><td>240</td><td>480</td><td>600</td></tr> <tr><td>1 PH</td><td>1 HP</td><td>3 HP</td><td></td><td></td><td></td></tr> <tr><td>3 PH</td><td>5 HP</td><td>5 HP</td><td>10 HP</td><td>10 HP</td><td></td></tr> </table> <p style="font-size: small;">SUITABLE FOR USE ON A CIRCUIT CAPABLE OF DELIVERING NOT MORE THAN 5000 RMS SYMMETRICAL AMPERES, 600 VOLTS MAXIMUM FUSE: 20A RK5 TIME DELAY TYPE USE FUSE ONLY AUXILIARY CONTACTS: A 600 P 600 GENERAL USE: 10A, 415V</p> <p style="font-size: x-small;">PATENT APPLIED FOR REGD. DESIGN NO.: 187874</p>	V AC	120	200	240	480	600	1 PH	1 HP	3 HP				3 PH	5 HP	5 HP	10 HP	10 HP	
V AC	120	200	240	480	600																																																			
1 PH	0.5 HP	1 HP																																																						
3 PH	3 HP	3 HP	5 HP	7.5 HP																																																				
V AC	120	200	240	480	600																																																			
1 PH	1 HP	2 HP																																																						
3 PH	3 HP	3 HP	7.5 HP	10 HP																																																				
V AC	120	200	240	480	600																																																			
1 PH	1 HP	3 HP																																																						
3 PH	5 HP	5 HP	10 HP	10 HP																																																				

QUALIFIED

QA 200905
DATE

ALL DIMENSION ARE IN mm				SHEET 4 of 4		SCALE : N.T.S	
Tolerance: : Unless noted (±) : fraction 1/32" ; Decimal 0.031				Prepared by		AL-ALL. HUSSAIN	
				INITIATOR		M. IBRAHIM	
				ENG. CHECK		AHMAD	
SEE TABLE	SUF. 56 TO 68 MOVED TO SEPARATE SHEET			HUSAIN	07-09-05	VERIFIED Moh'd Al Sayyed	
	ADDED SUFF# 60 TO 68			HUSAIN	20-03-05	APPROVAL MATHEW	
				Issue Date		19-07-2003	
Rev #	Revision Details			Designer	Rev.Date	File Ref. Ziiceip001\Eng-Specs\800\09850-55	