



ENGINEERING SPECIFICATION

Part No.	800-547-32	REV
Ref. Code	401	02
U.O.M.	EA	
Engg. Ref.	UP/UC	

Part Description : MOTOR, 1/3HP; 460-1-60

ZZ1-1

BASIC REQUIREMENTS	
RATED SUPPLY (V/ PH/ Hz)	460-1-60
DIRECTION OF ROTATION	C.W. DRIVE END.
FRAME TYPE	48Y
MOTOR CONSTRUCTION	TEAO/ TENV
INSULATION CLASS	F
DUTY RATING	CONTINUOUS
RATED OUTPUT POWER (HP/ Watts)	1/3 HP
RATED SPEED (RPM) (FULL LOAD)	1100 ±25
CAPACITOR MOUNTING	NOT REQUIRED
STARTING DEVICE TYPE	PSC
OVERLOAD PROTECTION TYPE	INTERNAL THERMAL PROTECTION
NOISE LEVEL (dB)	60 Max.
CERTIFICATION DESIRED	N/A
WIRE LENGTHS & END TERMINALS	AS PER ENG.G SKETCH ENCLOSED

QUALIFIED

Lx 24/6/06
QA DATE

SHEET 1 of 6 SCALE : N.T.S

					WRITER	AL-ALI. HUSAIN	
					INITIATOR	M. SIRAJUDDIN	
					ENG. CHECK	IBRAHIM	
					VERIFIED	Moh'd Al Sayyed	
02	SPECS UPDATED IN NEW FORMAT	HUSAIN	17-06-06	APPROVED	MATHEW		
01	REVISED AS PER VENDOR INFO.			Issue Date	08-07-2001		
REV	Revision Details	Designer	Rev.Date	File Ref.	Ziicnas\Eng-Specs\800\54732		



ENGINEERING SPECIFICATION

Part No.	800-547-32	REV	02
Ref. Code	401		
U.O.M.	EA		
Engg. Ref.	UP/UC		

Part Description : MOTOR, 1/3HP; 460-1-60

ZZ1-2

REFERENCE DATA

VENDOR : EMERSON	
BEARING TYPE OLP MODEL CAPACITOR RATING COIL RESISTANCE (Main & Aux.) SERVICE FACTOR POWER FACTOR EFFICIENCY	: SLEEVE : AUTO RESET : 5MFD/ 370VAC : 40•8/ 33.4 Ohm/ Phase : 1.1 : 0,89 : 85%
PART IDENTIFICATION : K55HXJBJ-8983	
MOTOR MOUNTING, SHAFT DIMENSIONS, WIRES : REFER SKETCH ON SHEET 5	
END TERMINALS AND WIRE HOLDINGS : REFER SKETCH ON SHEET 5	

PARAMETER @ RATED SUPPLY	UOM	460-1-60	REMARKS
RATED SUPPLY:			
BREAKDOWN TORQUE	Oz.ft	39.8	
LOCKED ROTOR TORQUE	Oz.ft	6.7	
RATED TORQUE (FULL LOAD)	Oz.ft	29	
RATED INPUT POWER	Watts	292	
RATED POWER (NO LOAD)	Watts	89	
RATED CURRENT (FULL LOAD)	Amps	0.8	
RATED CURRENT (NO LOAD)	Amps	0.5	
LOCKED ROTOR CURRENT	Amps	2.6	
RATED SPEED (NO LOAD)	RPM	1198	
BREAKDOWN SPEED	RPM	985	

QUALIFIED

QA

 26/6/1
 DATE

				SHEET 2 of 6	SCALE : N.T.S
				WRITER	AL-ALI. HUSAIN
				INITIATOR	M. SIRAJUDDIN
				ENG. CHECK	IBRAHIM
				VERIFIED	Moh'd Al Sayyed
02	SPECS UPDATED IN NEW FORMAT	HUSAIN	17-06-06	APPROVED	MATHEW
01	REVISED AS PER VENDOR INFO.			Issue Date	08-07-2001
REV	Revision Details	Designer	Rev.Date	File Ref.	Ziicnas\Eng-Specs\800\54732



ENGINEERING SPECIFICATION

Part No.	800-547-32	REV
Ref. Code	401	02
U.O.M.	EA	
Engg. Ref.	UP/UC	

Part Description : MOTOR, 1/3HP; 460-1-60

ZZ1-3

REFERENCE DATA

VENDOR : FASCO	
BEARING TYPE	: BALL
OLP MODEL	: AUTO RESET
CAPACITOR RATING	: 5MFD/370VAC
COIL RESISTANCE (Main & Aux.)	: 31.78/ 34.09 Ohm
SERVICE FACTOR	: 1.1
POWER FACTOR	: 0.80
EFFICIENCY	: 62%
PART IDENTIFICATION : 8556MTA-A17U	
MOTOR MOUNTING, SHAFT DIMENSIONS, WIRES : REFER SKETCH ON SHEET 6	
END TERMINALS AND WIRE HOLDINGS : REFER SKETCH ON SHEET 6	

PARAMETER @ RATED SUPPLY	UOM	RATED SUPPLY:		REMARKS
		460-1-60		
RATED SUPPLY:				
BREAKDOWN TORQUE	Oz.ft	43.8		
LOCKED ROTOR TORQUE	Oz.ft	9.2		
RATED TORQUE (FULL LOAD)	Oz.ft	25.1		
RATED INPUT POWER	Watts	403		
RATED POWER (NO LOAD)	Watts	122		
RATED CURRENT (FULL LOAD)	Amps	1.09		
RATED CURRENT (NO LOAD)	Amps	0.68		
LOCKED ROTOR CURRENT	Amps	3.23		
RATED SPEED (FULL LOAD)	RPM	1125		
RATED SPEED (NO LOAD)	RPM	1196		
BREAKDOWN SPEED	RPM	969		

QUALIFIED

Wx 24/6/06
QA DATE

				SHEET 3 of 6	SCALE : N.T.S
		WRITER	AL-ALL. HUSAIN		
		INITIATOR	M. SIRAJUDDIN		
		ENG. CHECK	IBRAHIM		
		VERIFIED	Moh'd Al Sayyed		
02	SPECS UPDATED IN NEW FORMAT	HUSAIN	17-06-06	APPROVED	MATHEW
01	REVISED AS PER VENDOR INFO.			Issue Date	08-07-2001
REV	Revision Details	Designer	Rev.Date	File Ref.	Ziicnas\Eng-Specs\800\54732



**ENGINEERING
SPECIFICATION**

Part No.	800-547-32	REV	02
Ref. Code	401		
U.O.M.	EA		
Engg. Ref.	UP/UC		

Part Description : MOTOR, 1/3HP; 460-1-60

ZZ1-4

OPERATION REQUIREMENTS

VENDOR	EMERSON	FASCO
PART IDENTIFICATION (VENDOR)	K55HXJBJ-8983	8556MTA-A17U
RATED SUPPLY (V/ PH/ Hz)	460-1-60	460-1-60
DIRECTION OF ROTATION	C.W DRIVE END.	CW DRIVE END
OLP DETAILS (If applicable)	AUTO RESET OVERLOAD	INTERNAL
CAPACITOR RATING (If applicable)	5MFD/ 370VAC	5 MFD / 370VAC
COIL RESISTANCE (MAIN) AT 20°C	40.8 Ohm	31.78 Ohm
COIL RESISTANCE (AUX) AT 20°C	33.4 Ohms	34.09 Ohm

DETAILS FOR MOTOR MOUNTING / SHAFT DIMENSIONS/ WIRES / END TERMINALS AND WIRE HOLDINGS WILL BE AS PER ENGINEERING SKETCH ENCLOSED

PERFORMANCE CHARACTERISTICS

PARAMETER @ RATED SUPPLY	UOM	RATED SUPPLY:	RATED SUPPLY:	REMARKS
		EMERSON	FASCO	
		460-1-60	460-1-60	
RATED INPUT POWER	Watts	292	403	
RATED SPEED (FULL LOAD)	RPM	1144	1125	
MAX. OPERATING TEMP.	Deg C	75°C		
NOISE LEVEL	dB	60 Max.		

CERTIFICATION REQUIREMENTS : UL
FREQUENCY OF SUBMISSION : 1 YEAR

QUALIFIED	
Ld QA	24/6/1 DATE

SHEET 4 of 6

SCALE : N.T.S

				WRITER	AL-ALI. HUSAIN	
				INITIATOR	M. SIRAJUDDIN	
				ENG. CHECK	IBRAHIM	
				VERIFIED	Moh'd Al Sayyed	
02	SPECS UPDATED IN NEW FORMAT	HUSAIN	17-06-06	APPROVED	MATHEW	
01	REVISED AS PER VENDOR INFO.			Issue Date	08-07-2001	
REV	Revision Details	Designer	Rev.Date	File Ref.	Ziicnas\Eng-Specs\800\54732	



ENGINEERING SPECIFICATION

Part No.	800-547-32	REV	02
Ref. Code	401		
U.O.M.	EA		
Engg. Ref.	UP/UC		

Part Description : MOTOR, 1/3HP; 460-1-60

ZZ1-5

MODEL	K55HXUBJ-8983	REF.	ZAMIL AIR CONDITIONERS	HP.	1/3	VOLTS	460	AMPS	0.9	HZ.	60	R.P.M.	1075	ROTATION	CUST. PT. NO.						
CUSTOMER	ZAMIL AIR CONDITIONERS			HP.	1/3	VOLTS	460	AMPS	0.9	HZ.	60	R.P.M.	1075	ROTATION	CUST. PT. NO.						
REVISION RECORD FOR SAMPLE	<table border="1" style="width: 100%; border-collapse: collapse;"> <tr> <th>REV</th> <th>DATE</th> <th>DESCRIPTION</th> </tr> <tr> <td>1</td> <td>9-24-2001</td> <td>REVISION DRAUGHTING</td> </tr> </table>															REV	DATE	DESCRIPTION	1	9-24-2001	REVISION DRAUGHTING
REV	DATE	DESCRIPTION																			
1	9-24-2001	REVISION DRAUGHTING																			
ISSUED BY	D. HUMMEL			REVIEWED BY	D. HUMMEL			ENGINEER APPROVED	R. BITSCH												
TITLE	ASSEMBLED VIEW																				
CODE	V01			ITEM NO.	739009											SIZE	A				

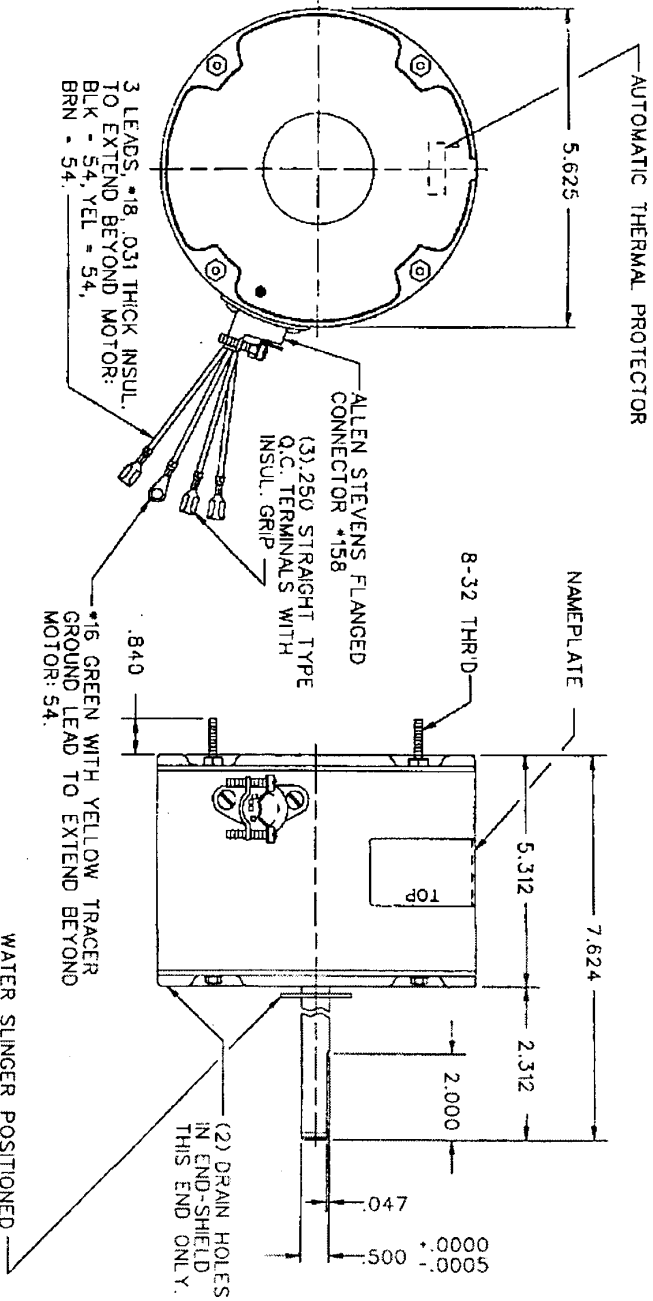
SHEET OF
ZAC REV:

EMERSON MOTOR DIVISION
ST. LOUIS, MO U.S.A.

MODEL: K55HXUBJ-8983 HP: 1/3
VOLT: 460 Hz: 60 AMP: 0.9 PH: 1
R.P.M.: 1075 THERMALLY PROTECTED
PART NO: 800-547-32 MFG. NO. 1-
75°C AMB AIR OVER COAT INS CL F FRAME 48Y

WARNING: FOLLOW ALL SAFETY PRECAUTIONS TO
PREVENT PERSONAL INJURY OR PROPERTY DAMAGE. TO
PREVENT PERSONAL INJURY OR PROPERTY DAMAGE, DO NOT
REPLACE THE MOTOR COVER UNTIL THE MOTOR IS COMPLETELY
STOPPED AND THE MOTOR IS COMPLETELY COOLED.

BLK - LINE
YEL - SHIELD
TRC - TRACER
50 AMP 370 VAC CW
ROTATION



QUALIFIED	DATE 9/19/02
AO	AO

ALL DIMENSIONS ARE IN INCHES
SHEET 5 of 6
SCALE : N.T.S

Tolerance: : Unless noted (±) : fraction 1/32" ; Decimal 0.031

	WRITER	AL-ALI. HUSAIN					
	INITIATOR	M. SIRAJUDDIN					
	ENG. CHECK	IBRAHIM					
	VERIFIED	Moh'd Al Sayyed					
02	SPECS UPDATED IN NEW FORMAT	HUSAIN	17-06-06	APPROVED	MATHEW		
01	REVISED AS PER VENDOR INFO.			Issue Date	08-07-2001		
REV	Revision Details	Designer	Rev.Date	File Ref.	Z:\icnas\Eng-Specs\800\54732		



ENGINEERING SPECIFICATION

Part No.	800-547-32	REV
Ref. Code	401	02
U.O.M.	EA	
Engg. Ref.	UP/UC	

Part Description : MOTOR, 1/3HP; 460-1-60

MIC No 028544 By: PICHET Date: 17/02/06 MIC Note: NEW MODEL RELEASED

THIRD ANGLE PROJECTION

192.0, 117, 59.0, 30, 11.42 FLAT, 2.12.889 ±0.015, SLINGER, 2 DRAIN HOLES ON END SHIELD, LABEL ARROW, 21.0 (4 PLACES), WELD, RATING LABEL, LABEL CONNECTION, TIE ROD #R-32 UNC ON A.P.C.D. 131.0, GROUND LEAD 18 AWG UL1015 @ 1370-25 (GREEN-YELLOW) WITH TERMINAL RING 7 5.0, 3 LEADS 18 AWG UL1015 @ 1370-25 (YELLOW / BROWN / BLACK) WITH TERMINAL Q.C. & 3 SPACE, EXTRA NUT #R-32 UNC AND WASHER FLAT, DETAIL 'A'

MOTOR SPECIFICATION

8556MTA-A17U	
Q.R. No.	Y002723
CUSTOMER	ZAMIL AIR CONDITIONERS
VOLTS	460
Hz	60
Ph	1
Defk	S1 AOM
RPM	1075
AMPS	1.15
NOM. OUTPUT	(1/3 HP)
ROTATION	CLOCKWISE AT DRIVE END
CAPACITOR START	µF/V
Run	5/...
µF/V	
TOTALLY ENCLOSED	
ENCLOSURE	PSC
MOTOR TYPE	INSULATION CLASS F
THEMAL PROTECTION	AUTO RESET OVERLOAD
APPLICATION	FAN CONDENSING - SHAFT HORIZONTAL
BEARING D.E.	6202 ZZ
BEARING N.D.E.	6202 ZZ
SUPPLY LEAD	AS SHOWN
EARTH PROVISION	VIA SUPPLIED LEAD
BASIC BUILD SPECIFICATION	305-570-80
PAINT: COLOUR	PC GREY CASE
PERFORMANCE SPECIFICATION	PLAIN EISHIELDS
CONNECTOR DIAGRAM	393-116-01
RATING LABEL	AS SHOWN

UNLESS OTHERWISE SPECIFIED: MOTOR WEIGHT DIMENSIONS ARE IN MM TOLERANCES

DECIMALS	ANGULAR
X ± 1.0	± 30'
XX ± 0.1	

THE DRAWING REMAINS THE PROPERTY OF FASCO. BACKGROUND MARKING NOT TO BE DETRACTED. WITHOUT THE PERMISSION, NO COPY SHOULD BE MADE.

WARNING
MOTOR FITTED WITH INTERNAL AUTO RESET OVERLOAD AND MAY RESTART WITHOUT WARNING

FASCO THAILAND
297-3 BOD. 3, BANHOLY - SAMOY RD. BANGKOK 1000 THAILAND.

FRAME	MOTOR
STATUS	B388:8556T-250-MCX:ZAMIL
SHEET	DWG NO. 8556MTA-A17U
A3	A

ZZ1-6

QUALIFIED

Vx QA DATE
 24/8 DATE

ALL DIMENSIONS ARE IN mm				SHEET 6 of 6		SCALE : N.T.S	
Tolerance: : Unless noted (±) : fraction 1/32" ; Decimal 0.031				WRITER	AL-ALI. HUSAIN		
				INITIATOR	M. SIRAJUDDIN		
				ENG. CHECK	IBRAHIM		
				VERIFIED	Moh'd Al Sayyed		
02	SPECS UPDATED IN NEW FORMAT		HUSAIN	17-06-06	APPROVED	MATHEW	
01	REVISED AS PER VENDOR INFO.				Issue Date	08-07-2001	
REV	Revision Details		Designer	Rev.Date	File Ref.	Ziicnas\Eng-Specs\800\54732	