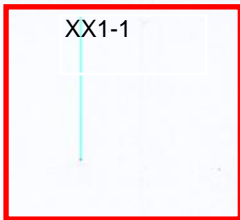




**COMPONENT-MATERIAL  
ENGINEERING SPECIFICATION**

Part No.	800- 225-02	REV	02
Ref. Code	301		
U.O.M.	EA		
Engg. Ref.	UP/UC		

Part Description : ALUMINIUM ; FAN PROPELLER; 24"OD; 3 BLADES



**BASIC REQUIREMENTS**

PROPELLER DIAMETER (O.D. OF BLADE)	24"
No. OF BLADES	3
PROPELLER MATERIAL	ALUMINIUM
SPIDER MATERIAL	STEEL
HUB MATERIAL	STEEL, NON-RESILIENT, ZINC PLATED
SURFACE FINISH	GALVANISE COATED STEEL
MAX. OPERATION TEMP. °C	N/A
DIRECTION OF ROTATION	C.C.W (AIR IN FACE)

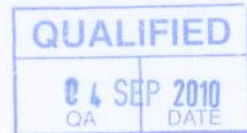
**REFERENCE DATA**

VENDOR	LAU INDUSTRIES
VENDOR PART IDENTIFICATION	T10S08A 2418.5 CCWI

**MECHANICAL CHARACTERISTICS**

OUT OF BALANCE	0.150OZ-IN
CONCENTRICITY	0.18 F.I.R.
BLADE PITCH	18°
SET SCREWS DETAILS	2 Nos. (SIZE M8x16TPI)

DIMENSIONAL DETAILS AND OTHER KEY FEATURES ARE AS PER THE ENGG. DRG PROVIDED IN PART #4



				SHEET 1 of 2	SCALE : N.T.S
				WRITER	HUSSAIN AL-ALI
				INITIATOR	M. SIRAJUDDIN
				ENG. CHECK	M. SIRAJUDDIN
02	SPEC UPDATED AS PER VENDOR INFO.	HUSAIN	31-08-10	APPROVED	A. MATHEW
01	SPECS UPDATED IN NEW TEMPLATE	HUSAIN	16-09-06	Issue Date	25-03-1998
REV	Revision Details	Designer	Rev.Date	File Ref.	Ziicnas\Eng-Specs\800\22502



**COMPONENT-MATERIAL  
ENGINEERING SPECIFICATION**

Part No.	800- 225-02	REV 02
Ref. Code	301	
U.O.M.	EA	
Engg. Ref.	UP/UC	

Part Description : ALUMINIUM ; FAN PROPELLER; 24"OD; 3 BLADES

XX1-2

**OPERATION REQUIREMENTS**

PROPELLER DIAMETER (O.D. OF BLADE)	24"
PROPELLER MATERIAL	ALUMINIUM
SPIDER MATERIAL	STEEL
HUB MATERIAL	STEEL, NON-RESILIENT, ZINC PLATED
SURFACE FINISH	GALVANISE COATED STEEL
MAX. OPERATION TEMP. °C	N/A
No OF BLADES	3

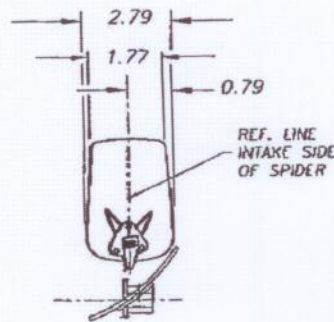
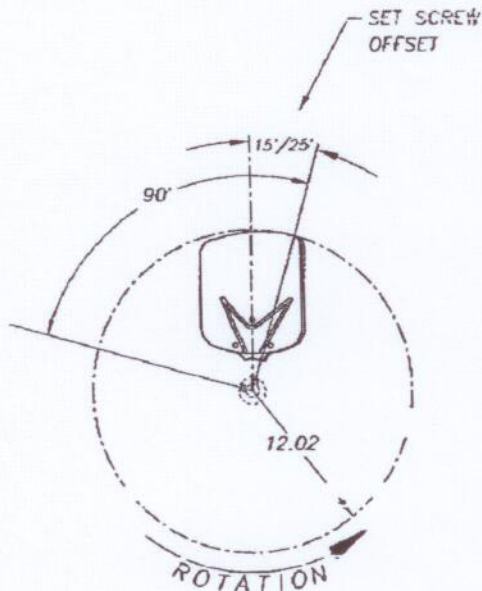
**LAU INDUSTRIES  
MODEL No. T10S08A 2418.5 CCWI**

NOTE:  
1) ROTATION DETERMINED BY FACING AIR DISCHARGE.

REVISIONS			
NO	REV	DESCRIPTION	DATE

CUSTOMER NAME: AL ZAMIL  
LAU SAMPLE #: X05-440  
CUST. PART NO.:

**QUALIFIED**  
SEP 2010  
QA DATE



← AIR FLOW →

ROTATION ARROW	←
LAU SAMPLE NUMBER	X05-440
NOMINAL DIAMETER	24
NOMINAL PITCH	18"
ROTATION	CCW
HUB LOCATION	INTAKE
HUB (BORE) INSIDE DIA.	1.50
LENGTH	1.50
O.D.	1.25
KEYWAY SIZE	~
NO. OF SET SCREWS	2
BLADE NUMBER OF BLADES	3
MATERIAL	Alum
FINISH	MILL
SPIDER MATERIAL	STEEL
FINISH	ELECTROCOAT

ALL DIMENSIONS ARE IN INCHES

SHEET 2 of 2

SCALE : N.T.S

WRITER	HUSSAIN AL-ALI				
INITIATOR	M. SIRAJUDDIN				
ENG. CHECK	M. SIRAJUDDIN				
APPROVED	A. MATHEW				
02	SPEC UPDATED AS PER VENDOR INFO.	HUSAIN	31-08-10	Issue Date	25-03-1998
01	SPECS UPDATED IN NEW TEMPLATE	HUSAIN	16-09-06	File Ref.	Ziicnas\Eng-Specs\800\22502
REV	Revision Details	Designer	Rev.Date		