



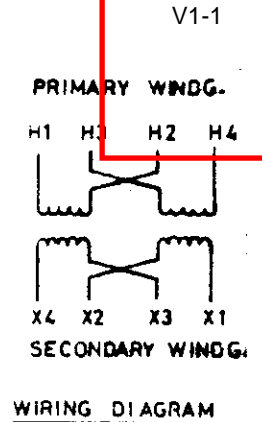
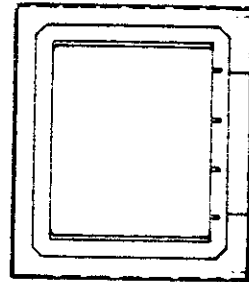
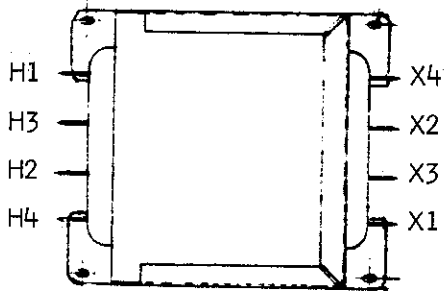
# ENGINEERING SPECIFICATION

REV: 01

PART : TRANSFORMER 1PH-50/60HZ  
240/480 TO 120/240

PART NO. 800-321-SUFF(06 & 07)

ENG'G. REF. ONLY



DESCRIPTION : INDUSTRIAL CONTROL TRANSFORMER CORE AND COIL TYPE OPEN -  
STYLE FOR PANEL BOARD MOUNTING.

APPROVAL : UL RECOGNISED

PRIMARY : 240/480 VOLTS 50/60 HZ

SECONDARY : 120/240 VOLTS 50/60 HZ

LOAD : RELAY COILS, CONTACTOR COILS AND SOLENOIDS 0.2 PF.

REGULATION : NO LOAD / FULL LOAD, 3% MAXIMUM.

SUFF R A T I N G

06 500 VA IN STILL AIR

07 750 VA IN STILL AIR

AL-ZAMIL REFRIGERATION INDUSTRIES

SHEET 1 OF 3 SHEETS

CHECKED BY *Abdullah Khan*  
PONNERI RAMESH *13/06/89*

APPROVED BY LARRY F. HILDEBRAND *[Signature]*

01 ADDED SHEETS 2 & 3 VENDOR INFO. *[Signature]*

# REVISIONS

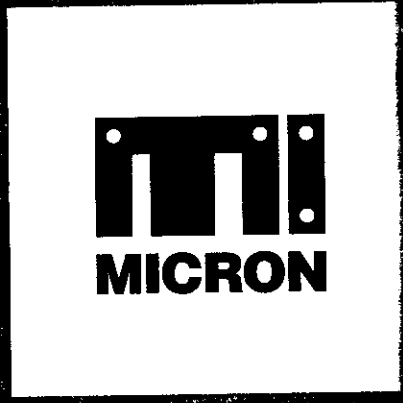
DATE

ISSUE DATE 13TH JUNE 1989

REV.# 01

The Micron Edge

NUMBER ONE



**The Micron Edge** in industrial control transformers.

While other manufacturers view control transformers as just another variety of products, we view them as the **EDGE** major product focus for Micron. This focus, along with Micron's commitment to customer service and quality, has made Micron **Number One** with suppliers of transformers.

8

Our commitment to quality is reflected in our ISO 9001 certification, which is the industry standard for manufacturing excellence.

Our commitment to customer service is reflected in our 24-hour technical support and our ability to provide custom solutions for our customers.

Our commitment to quality is reflected in our ISO 9001 certification, which is the industry standard for manufacturing excellence.

# ImperviTRAN®

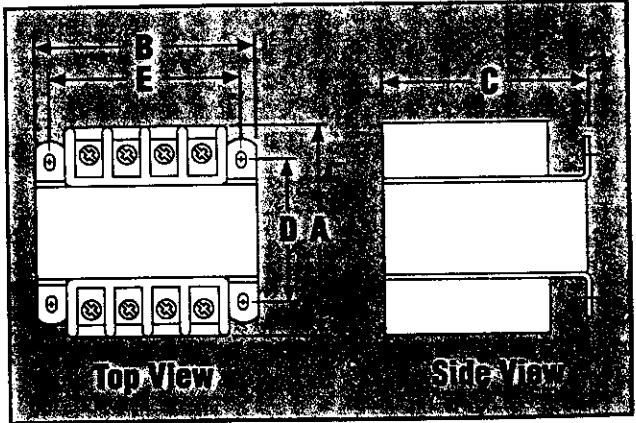
V1-2

CLASS 105°C INSULATION SYSTEM



**Impervitran**... is the ultra-reliable industrial control circuit transformer. Behind its clean design is a toughness that makes it measure up to any requirement placed upon it. Manufacturers of industrial and commercial equipment, control panels and centers have made **Impervitran** the most accepted transformer in the industry.

- Epoxy encapsulated coils
- Secondary fuse clips where applicable
- Optional Primary Fusing
- Molded terminal barriers
- 10-32 screw terminals
- Molded-in terminals
- Phil-slot screws ▶



**Figure B**

Impervitran Construction  
 Class 105°C Insulation system  
 55°C temperature rise  
 Epoxy encapsulated coils

# Group K



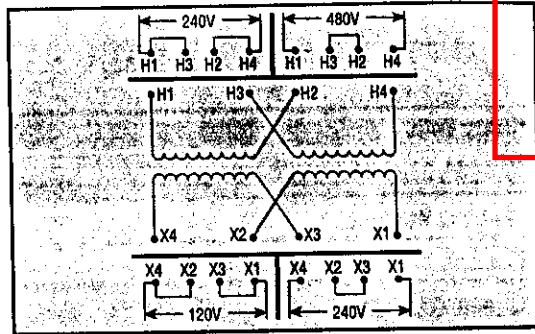
**Primary Volts**  
240 x 480

---

**Secondary Volts**  
120 x 240

---

UL and SF Listed      50 / 60 Hz



VA Rating	Catalog Number	Construction Figure	Output Amps	DIMENSIONS (inches) • mm					Mounting Slots	Approx. Wt. (lbs.) • kg
				A	B	C	D	E		
		B								
		B								
		B								
		B								
		B								
		B								
		B								
		B								
		B								
		B								
		B								
		B								
		B								
		B								
		B								
		B								
		B								
		B								
		B								
		B								

JJ suffix denotes transformer supplied with primary & secondary J-2 jumpers; secondary fuse clips not applicable.

# Group L

Universal Transformer  
MICRON

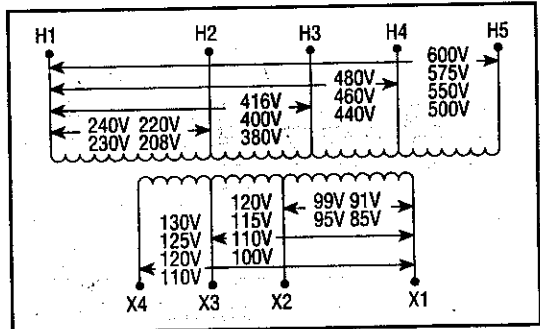
**Primary Volts**  
240/416/480/600, 230/400/460/575, 220/380/440/550, 208/500

---

**Secondary Volts**  
99 / 120 / 130, 95 / 115 / 125, 91 / 110 / 120, 85 / 100 / 110

---

UL and SF Listed      50 / 60 Hz



VA Rating	Catalog Number	Construction Figure	Output Amps	DIMENSIONS (inches) • mm					Mounting Slots	Approx. Wt. (lbs.) • kg
				A	B	C	D	E		
50	V050-0482-1	V	0.38	4 -102	3 3/8 -85	2 1/8 -73	2 7/16 -62	2 13/16 -71	1 3/8 X 3/4 -5 X 10	4.0 • 1.8
100	V100-0483-1	V	0.77	4 1/8 -117	3 3/8 -88	3 1/8 -81	3 1/8 -78	3 3/8 -79	1 3/8 X 3/4 -5 X 10	6.6 • 3.0
150	V150-0484-1	V	1.15	4 7/8 -118	4 1/2 -114	3 11/16 -97	2 7/8 -73	3 3/8 -95	1 3/8 X 3/4 -5 X 10	8.8 • 4.0
250	V250-0485-1	V	1.92	5 1/4 -140	4 7/8 -114	3 11/16 -97	4 1/8 -111	3 3/8 -95	1 3/8 X 3/4 -5 X 10	14.7 • 6.7
350	V350-0486-1	V	2.69	5 3/4 -143	5 1/8 -133	4 7/8 -113	4 3/8 -121	4 3/8 -111	1 3/8 X 1 1/8 -8 X 17	18.6 • 8.5
500	V500-0487-1	V	3.85	7 -178	5 1/4 -153	4 7/8 -118	6 1/8 -155	4 3/8 -131	1 3/8 X 1 1/8 -8 X 17	25.6 • 11.6
750	V750-0488-1	V	5.77	5 11/16 -144	6 3/8 -171	5 1/4 -146	4 1/8 -106	6 1/8 -154	1 3/8 X 1 1/8 -8 X 14	30.5 • 13.9

-1 suffix denotes transformer supplied with secondary fuse clips for a 1/2 x 1 1/2 fuse; primary jumpers not applicable.