



**COMPONENT-MATERIAL
ENGINEERING SPECIFICATION**

Part No.	800-087-36	REV	00
Ref. Code	409		
U.O.M.	EA		
Engg. Ref.	CAC/ CHILLER		

**Part Description : CIRCUIT BREAKER; 3 POLES; 160 to 200 AMPS /500 VOLTS/50/60Hz
TO BE USE FOR ; CHILLER AND CAC**

R2-1

PART 'A' ; BASIC REQUIREMENTS

PRODUCT RATING (AMPS/ VOLTS/ Hz)	160 to 200 AMPS/ 500VOLTS/ 50Hz/ 60Hz
TYPE	THERMAL MAGNETIC CIRCUIT BREAKER
No. OF POLES	3 POLES
MAGNETIC TRIP CHARACTERISTICS	6 In
THERMAL RATING (AMPS)	160 TO 200 AMPS
OPERATING AMBIENT TEMPERATURES	55° C
CERTIFICATION DESIRED	EN 60947-2; IEC 60947-2
LABEL MARKING	ITEM MUST BE MARKED WITH THE RESPECTIVE OPERATING VOLTAGE, CURRENT RATING AND VENDOR MODEL.

QUALIFIED

QA DATE 200905

ALL DIMENSIONS ARE IN mm

SHEET 1 of 4

SCALE : N.T.S

	WRITER	AL-ALI. HUSAIN	
	INITIATOR	JESSIE	
	ENG. CHECK	AHMAD	
	VERIFIED	Moh'd Al Sayyed	
	APPROVED	FAWAZ AL-BITAR	
01	Issue Date	14-09-2005	
REV	Revision Details	Designer	Rev.Date
		File Ref.	Ziicnas\Eng-Specs\800\08736



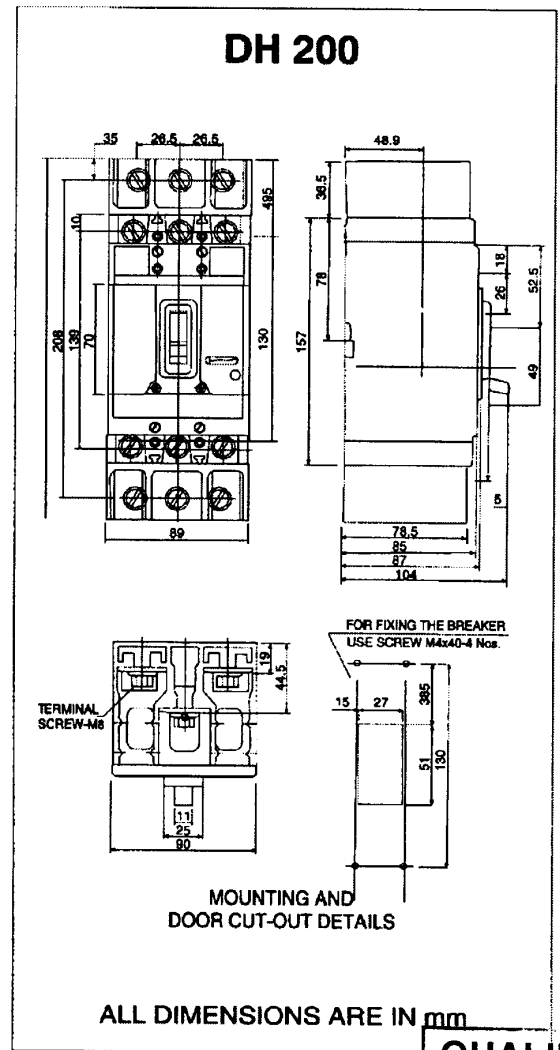
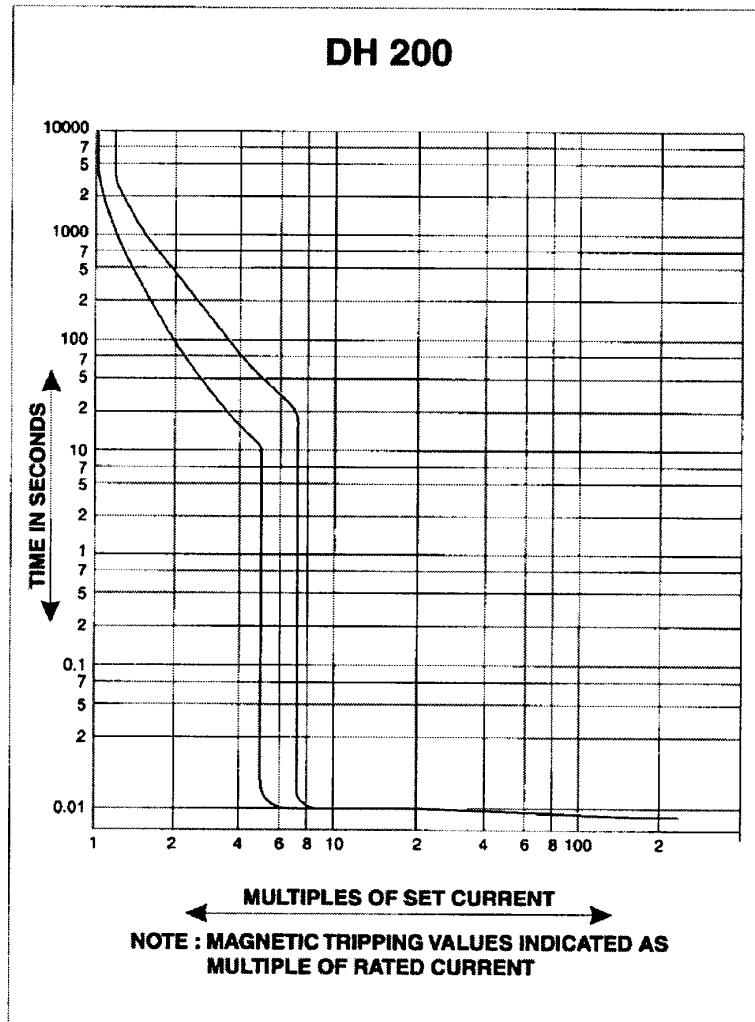
**COMPONENT-MATERIAL
ENGINEERING SPECIFICATION**

Part No.	800-087-36	REV	00
Ref. Code	409		
U.O.M.	EA		
Engg. Ref.	CAC/ CHILLER		

Part Description : CIRCUIT BREAKER; 3 POLES; 160 to 200 AMPS /500 VOLTS/50/60Hz

TO BE USE FOR ; CHILLER AND CAC

PART 'B' ; REFERENCE DATA		R2-2
PACKING TYPE	MUST BE IN A BOX AND DUST PROOF	
PACKING QTY.	1 PC PER PACKAGE	
PACKING MARKING	VENDOR MODEL MUST BE WRITTEN ON THE PACKAGING	



QUALIFIED
200905

ALL DIMENSIONS ARE IN mm				SHEET 2 of 4		SCALE: N.T.S
				WRITER	AL-ALI. HUSAIN	
				INITIATOR	JESSIE	
				ENG. CHECK	AHMAD	
				VERIFIED	Moh'd Al Sayyed	
				APPROVED	FAWAZ AL-BITAR	
				Issue Date	14-09-2005	
REV	Revision Details	Designer	Rev.Date	File Ref.	Ziicnas\Eng-Specs\800\08736	



**COMPONENT-MATERIAL
ENGINEERING SPECIFICATION**

Part No.	800-087-36	REV	00
Ref. Code	409		
U.O.M.	EA		
Engg. Ref.	CAC/ CHILLER		

**Part Description : CIRCUIT BREAKER; 3 POLES; 160 to 200 AMPS /500 VOLTS/50/60Hz
TO BE USE FOR ; CHILLER AND CAC**


R2-3

PART 'C' ; OPERATIONAL REQUIREMENTS

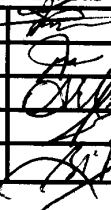
PRODUCT RATING (AMPS/ VOLTS/ Hz)	160 to 200 AMPS/ 500VOLTS/ 50Hz/ 60Hz
No. OF POLES	3 POLES
MAGNETIC TRIP CHARACTERISTICS	6 In
THERMAL RATING (AMPS)	160 TO 200 AMPS
OPERATING AMBIENT TEMPERATURES	55° C
CERTIFICATION DESIRED	EN 60947-2; IEC 60947-2
CERTIFICATE FREQ OF SUBMISSION	AFTER 2 YEARS
LABEL MARKING	ITEM MUST BE MARKED WITH THE RESPECTIVE OPERATING VOLTAGE, CURRENT RATING AND VENDOR MODEL.
APPROVED VENDOR	LARSEN AND TURBO (L&T)

NOTES

1. THERMAL MAGNETIC CIRCUIT BREAKER TO BE PROVIDED WITH 1 AUX(1 no- 1nc) AS STANDARD.
2. ALL THERMAL MAGNETIC CB CAN USE ADDITIONAL AUXLLIARY SWITCH (1NO-1NC), ZAC P/N 800-087-40
3. FOR THE OVER ALL SIZE AND MOUNTING DETAILS PLEASE REFER TO THE ATTACHED DRAWING IN PART B.

QUALIFIED
 QA
 200905
 DATE

ALL DIMENSIONS ARE IN mm SHEET 3 of 4 SCALE : N.T.S

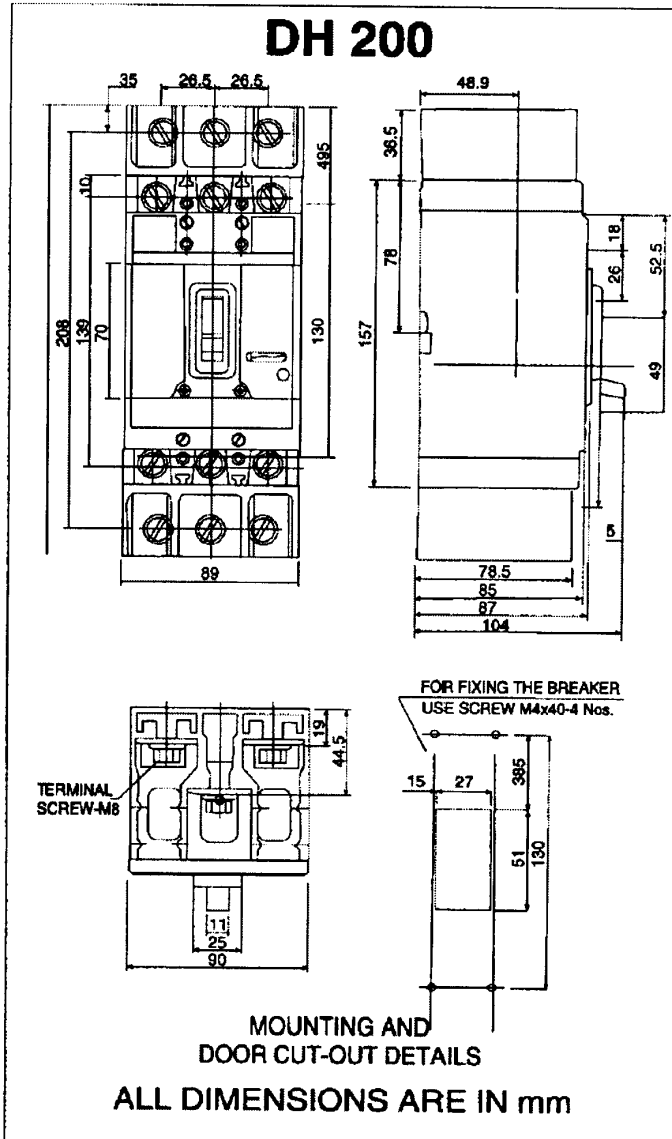
WRITER	AL-ALI. HUSAIN				
INITIATOR	JESSIE				
ENG. CHECK	AHMAD				
VERIFIED	Moh'd Al Sayyed				
APPROVED	FAWAZ AL-BITAR				
Issue Date	14-09-2005				
REV	Revision Details	Designer	Rev.Date	File Ref.	Ziicnas\Eng-Specs\800\08736

Part No.	800-087-36	REV	00
Ref. Code	409		
U.O.M.	EA		
Engg. Ref.	CAC/ CHILLER		

**Part Description : CIRCUIT BREAKER; 3 POLES; 160 to 200 AMPS /500 VOLTS/50/60Hz
TO BE USE FOR ; CHILLER AND CAC**

PART 'D' ; OVERALL SKETCH

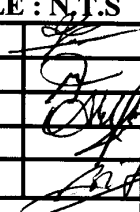
TERMINAL TYPE	CAN USE WITH LUGS OR BOX CLAMP
PRODUCT MARKING	ITEM MUST BE MARKED WITH THE RESPECTIVE OPERATING VOLTAGE, CURRENT RATING AND VENDOR MODEL.



R2-4

QUALIFIED

QA 200905
DATE

ALL DIMENSIONS ARE IN mm				SHEET 4 of 4		SCALE : N.T.S	
				WRITER	AL-ALI. HUSAIN		
				INITIATOR	JESSIE		
				ENG. CHECK	AHMAD		
				VERIFIED	Moh'd Al Sayyed		
				APPROVED	FAWAZ AL-BITAR		
				Issue Date	14-09-2005		
REV	Revision Details		Designer	Rev.Date	File Ref.	Ziicnas\Eng-Specs\800\08736	