



**COMPONENT-MATERIAL
ENGINEERING SPECIFICATION**

Part No.	801- 058- SUF (38-47)
Ref. Code	109
U.O.M.	EA
Engg. Ref.	AD

Part Description : BLOWER KIT ASSEMBLY ; TZAF .. FF T2

1FF-1

**APPROVED VENDOR: COMEFRI
TZAF 355 FF T2-TZAF1000 FF T2**

TECHNICAL CHARACTERISTICS:

- SCROLL IMPELLER** : MANUFACTURED FROM HIGH QUALITY GALVANIZED STEEL SHEET.
IMPELLER : IS MANUFACTURED IN COROSSION PROOF STEEL WITH WELDED BACKWARD CURVED TRUE AIRFOIL SHAPED BLADES, COATED WITH EPOXY PAINT. IMPELLERS ARE STATICALLY AND DYNAMICALLY BALANCED TO AN ACCURACY GRADE G=2.5 IN ACCORDANCE TO DIN ISO 1940-1 (VDI-2060)
- BLOWER MOUNT** : STEEL FRAME SECTION PAINTED WITH EPOXY PAINT& HAVE CAST IRON BEARING SUPPORT WITH GREASE POINTS.
- BEARINGS** : FOR 355T2 TO 500T2 -BEARINGS ARE SELF ALIGNING , SINGLE ROW, DEEP GROOVE, BALL TYPE WITH ECCENTRIC LOCKING RING
 FOR 560T2 & 630T2 – DOUBLE ROW BALL BEARINGS IN PILLOW BLOCK SPLITTED CAST IRON HOUSINGS
 FOR 710T2 TO 1000T2- DOUBLE ROW ROLLER BEARINGS IN PILLOW BLOCK SPLITTED CAST IRON HOUSINGS
- SHAFTS** : SHAFTS ARE MANUFACTURED FROM HIGH QUALITY STEEL, KEY WAY AT BOTH ENDS AND AT IMPELLER LOCATION POINTS PROTECTED WITH AN ANTICOROSSIVE COATING.

BLOWER KIT TO BE COMPRISED AND ASSEMBLED OF THE FOLLOWING ITEMS

- 1-SCROLL 2-IMPELLER 3-BEARINGS 4-CUT OFF 5-SHAFT 6-KEY
 7-BLOWER/BEARING MOUNTING FRAME 8-OUTLET FLANGE. 9-FOREFINGER

SUFFIX

- A. INLET VANE CONTROL
- B. INLET GUARD
- C. SHAFT GUARD
- D. INSPECTION DOOR
- E. DRAIN PLUG
- F. EXPLOSION PROOF DESIGN
- G. EXTENDED GREASE LINES
- H. FAN EPOXY COATED
- Z. SPECIAL DESIGN (SPECIFY)

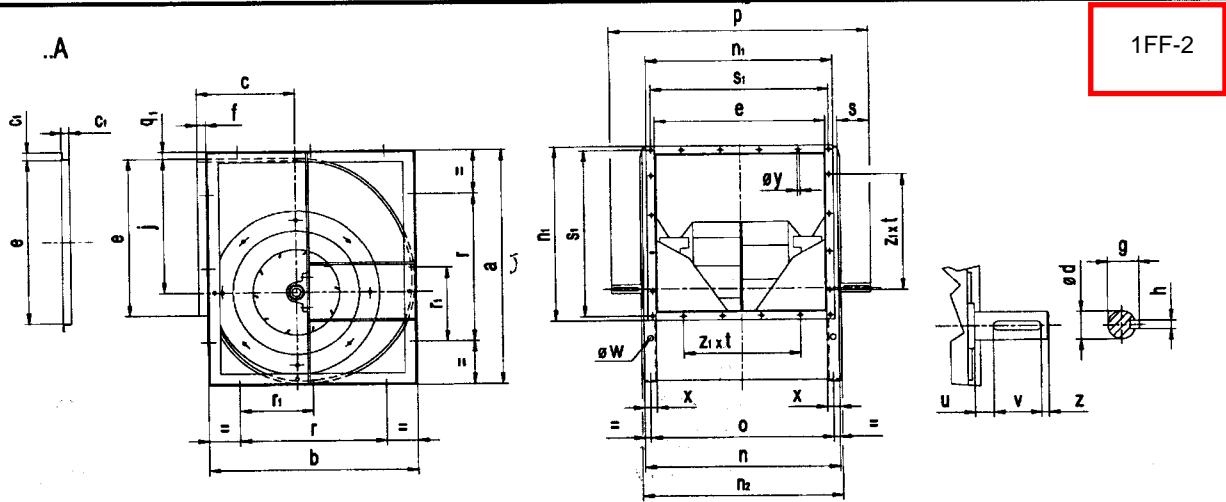
ALL DIMENSIONS ARE IN mm (BRACKET DIMENSIONS ARE IN INCHES)				SHEET 1 of 2		SCALE : N.T.S	
Tolerance: : Unless noted (±) : fraction 1/32" ; Decimal 0.031				WRITER	AL-ALI. HUSAIN		
				INITIATOR	NARENDRA		
				ENG. CHECK	OTHMAN		
				VERIFIED	Moh'd Al Sayyed		
				APPROVED	PETRI		
				Issue Date	13-02-2006		
REV	Revision Details			Designer	Rev.Date	File Ref.	Ziicnas\Eng-Specs\801\05838-47



**COMPONENT-MATERIAL
ENGINEERING SPECIFICATION**

Part No.	801-058-SUF (38-47)
Ref. Code	109
U.O.M.	EA
Engg. Ref.	AD

Part Description : BLOWER KIT ASSEMBLY ; TZAF .. FF T2



SUF	REV	MODEL	a	b	c	cl	Ød			e	f	g			h			j	n	n1	n2			o
							T1	T2L	T2			T1	T2L	T2	T1	T2L	T2				T1	T2L	T2	
38	00	TZAF 355 FF	655	542	261	25	30	-	35	453	39	33	-	38	8	-	10	384	533	503	541	-	641	493
39	00	TZAF 400 FF	736	606	291	25	30	-	35	507	45	33	-	38	8	-	10	432	587	557	595	-	695	547
40	00	TZAF 450 FF	828	674	322	25	35	-	40	569	52	38	-	43	10	-	12	486	649	619	677	-	757	609
41	00	TZAF 500 FF	918	744	352	25	35	-	40	638	56	38	-	43	10	-	12	540	718	688	746	-	746	678
42	00	TZAF 560 FF	1030	838	390	25	40	50	715	54	43	53.5	12	14	606	815	765	825	845	765				
43	00	TZAF 630 FF	1158	936	434	25	40	50	801	62	43	53.5	12	14	681	901	851	911	931	851				
44	00	TZAF 710 FF	1304	1048	485	25	50	60	898	71	53.5	64	14	18	767	998	948	1028	958					
45	00	TZAF 800 FF	1468	1174	540	25	50	60	1007	81	53.5	64	14	18	864	1107	1057	1137	1067					
46	00	TZAF 900 FF	1648	1312	604	30	60	1130	97	64	18	972	1230	1190	1260	1190								
47	00	TZAF 1000FF	1810	1444	657	30	60	1267	97	64	18	1068	1367	1327	1397	1327								

SUF	REV	MODEL	p			r	r1	s			s1	u			v			z	x	Øy	q1	Øw	z1xt
			T1	T2L	T2			T1	T2L	T2		T1	T2L	T2	T1	T2L	T2						
38	00	TZAF 355 FF	709	-	730	355	-	88	-	99	486	27	-	20	40	-	50	10	40	7.5	5	10	4x90
39	00	TZAF 400 FF	753	-	780	355	178	83	-	97	537	22	-	18	40	-	50	10	40	7.5	4	10	5x90
40	00	TZAF 450 FF	875	-	920	450	225	113	-	136	599	35	-	34	50	-	70	10	40	7.5	6	12	6x90
41	00	TZAF 500 FF	906	-	955	450	225	94	-	119	668	16	-	17	50	-	70	10	40	7.5	4	12	6x90
42	00	TZAF 560 FF	1028	1118	500	250	107	152	745	14	22	70	80	10	50	7.5	6	15	7x90				
43	00	TZAF 630 FF	1115	1120	560	280	107	160	831	14	30	70	80	10	50	7.5	7	15	8x90				
44	00	TZAF 710 FF	1260	1336	630	315	131	169	928	23	24	80	90	10	50	7.5	6	18	9x90				
45	00	TZAF 800 FF	1367	1445	710	355	130	169	1037	22	24	80	90	10	50	7.5	7	18	11x90				
46	00	TZAF 900 FF	1529	1574	800	400	150	172	1164	25	27	90	90	10	50	10	7	18	11x100				
47	00	TZAF 1000FF	1666	1712	900	450	150	173	1301	25	28	90	90	10	50	10	7	18	12x100				

ALL DIMENSIONS ARE IN mm (BRACKET DIMENSIONS ARE IN INCHES) SHEET 2 of 2 SCALE : N.T.S

Tolerance: : Unless noted (±) : fraction 1/32" ; Decimal 0.031				WRITER	AL-ALI. HUSAIN
				INITIATOR	NARENDRA
				ENG. CHECK	OTHMAN
				VERIFIED	Moh'd Al Sayyed
				APPROVED	PETRI
				Issue Date	13-02-2006
REV	Revision Details			Designer	Rev.Date
				File Ref.	Ziicnas\Eng-Specs\801\05838-47