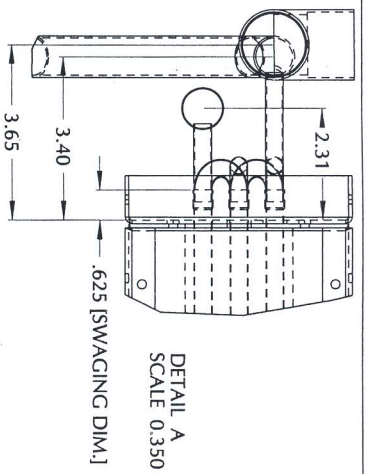
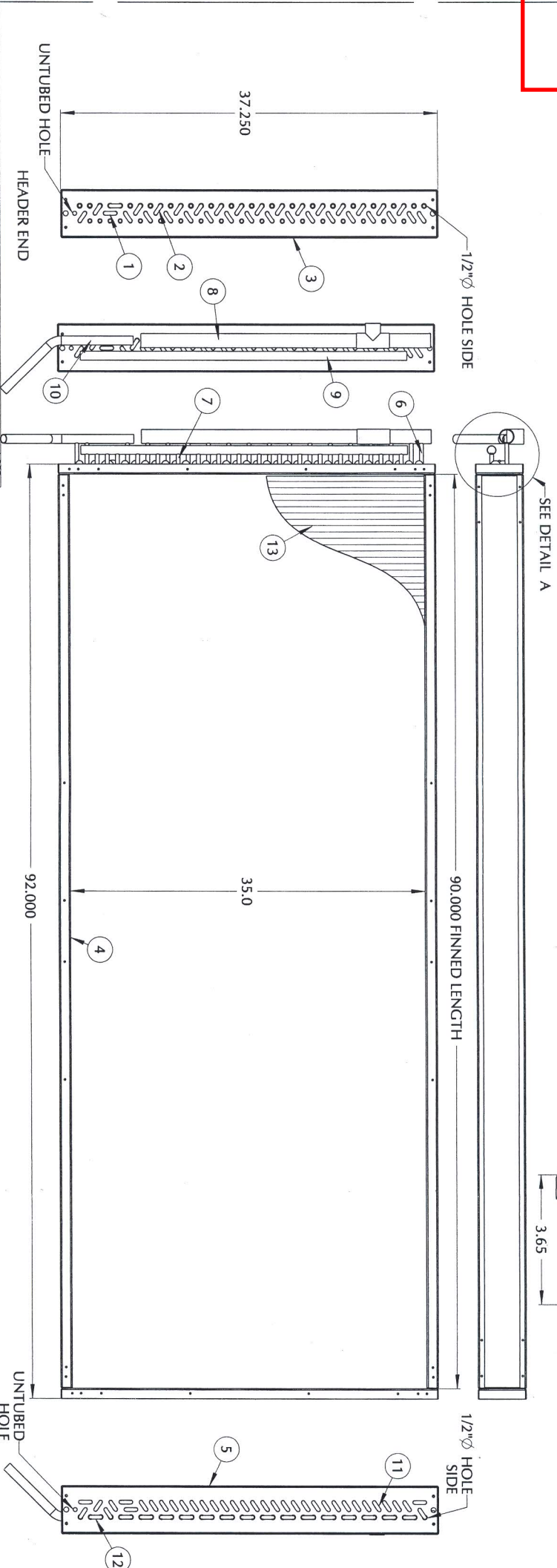


3A101752 SU

CAX 70

SUFF	MATL.	PART NO.	QTY	FPI	ITEM#110,901 (*)	ITEM#121,000 (*)	MATL.
01	ALUM.	3A101795	1260	14	3A101739	3A101740	IGT
02	MHGC	3A101796	1260	14	3A101739	3A101740	IGT
03	COPPER	3A101797	1260	14	3A101739	3A101740	IGT
04	ALUM.	3A941082	1080	12	3A101739	3A101740	IGT
05	MHGC	3A101798	1080	12	3A101739	3A101740	IGT
06	COPPER	3A101799	1080	12	3A101739	3A101740	IGT

1RR-1



SL. NO.	PART NO.	DESCRIPTION	QTY.	REF. TAB.
13		FIN S: 3/8" Ø, 3 ROWS, 2,250" X 35,000"		18
12	REF. TAB.	HAIR PIN : 3/8" DIA X 0.14" WTX 1.000" C/C		18
11	REF. TAB.	HAIR PIN : 3/8" DIA X 0.14" WTX 0.901" C/C		34
10	3A101753	ASS'Y HEADER SUBCOOL. OUT	1	
9	3A101746	ASS'Y. HEADER LIQUID	1	
8	3A101743	ASS'Y. HEADER HOT GAS	1	
7	3A101742	TUBE FDR. HDR. LIQ. AS. C.: 0.375" DIA X 0.22" WTX 1.625" LG.	18	
6	3A101741	TUBE FDR. HDR. HOT GAS: 0.375" DIA X 0.22" WTX 2.700" LG.	18	
5	3A101738	END PLATE 3R	1	
4	3A101737	CHANNEL COIL TOP/BOTTOM	2	
3	3A101736	END PLATE 3R	1	
2	311-237-00	ASS'Y. RETURN BEND, 0.901" C/C	32	
1	311-216-00	ASS'Y. RETURN BEND, 1.000" C/C	2	

NO.	DESCRIPTION	DESIGNER	DATE	Appr.	Engg. Chk.	Design	Des.	Chk.	Supervisor	P. Eng.	Manager	Dpt./Unit Manager	AL SAVED
1	OVERED ENDS CAPS ON ITEM 8, 9 & 10	KIM L.	13-04				ENG. ABBADI	ENG. ABBADI	J. USMANI	O. AHMED	ASIF PASHA		

Zamil
Air Conditioners

ZAMIL AIR CONDITIONERS
DAMHAM, SAUDI ARABIA

Modl.: * * * * * Weight: * * * * * Kg
 Gauge: * * * * * Scale: 1 : 0.100
 Finish: * * * * * Ref.: INTRALINK

Desc.: **COIL & HEADER ASSY**

P/N **3A101752 SU** Rev. 01 Date: 04-Aug-07